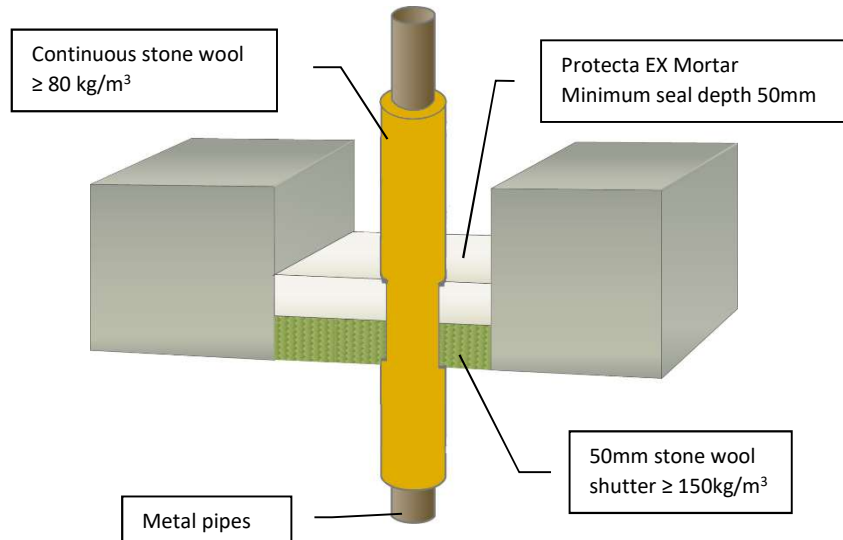


Protecta EX Mortar - Metal Pipe, Continuous Insulation in 100mm Concrete Floor

Installation Instructions

1. Ensure the faces of the aperture opening are free of dust and any other contaminants. The faces may be moistened for better adhesion.
2. The seal can be positioned to either side of the construction or anywhere in between.
3. When installing Protecta® EX Mortar in hollow floor slabs or boards, level the fire seal with the soffit side. Ensure there is sufficient thickness of concrete below the void for the depth of mortar. Where this is not the case, tubular voids should be filled with stone wool normally the same thickness as the depth of the floor slab.
4. Install a stone wool shutter board to achieve the required thickness of mortar. Make sure that this achieves a very tight seal – any small openings should be sealed with Protecta® FR Acrylic.
5. Pour clean water into a suitable mixing vessel and pour enough mortar to obtain the required consistency. Mix well to avoid lumps. Always add the mortar to the water, do not reverse this mixing process.
6. Once the desired consistency is achieved pour or trowel the mortar onto the shutter board making sure that it flows into all corners and around services. Apply a firm pressure to the mortar to eliminate any trapped air bubbles. Build up to the required depth.



Loadbearing Properties: NOTE following for Health and Safety requirements -
 Soft body impact, serviceability 500Nm. Soft body impact, safety in use 700Nm. Hard body impact serviceability 6Nm. Hard body impact, safety in use 10Nm. Concentrated load to 15kN on size up to 1500mm x1000mm (no failure), 4.85kN on sizes up to 1200mm x 2400mm.

Minimum separations and limitations
 An aperture can include several services, and they may also be different. Services within the system Protecta® FR Board seal do not require a minimum separation, except pipes where pipe insulation penetrates the seal and plastic pipe penetrations which should be a minimum of 30 mm from other services in the aperture. Services should be a minimum of 25mm from seal edges. The total amount of cross sections of services (including insulation) should not exceed 60% of the penetration area. The minimum permitted separation between adjacent apertures is 200mm.

System/FPA Register ID# FC338	
Products	Protecta EX Mortar Stone wool shutter
Application	Fire stopping of insulated steel pipes in rigid floors
Construction	Minimum floor thickness of 100mm and comprise aerated concrete or concrete with a minimum density of 650kg/m³

Fire & Sound classification	
<u>Steel pipes</u> ≤ Ø324mm with 20-80mm thick stone wool insulation in maximum apertures 1200 x 2400mm FRR -/180/180 or 550 x 1100mm FRR -/240/240	
<u>Copper pipes</u> ≤ Ø54mm with 20-80mm thick stone wool insulation in maximum apertures 1200 x 2400mm FRR -/180/120	
<u>Alupex pipes</u> ≤ Ø75mm with 20-50mm thick stone wool insulation in maximum apertures 1200 x 2400mm FRR -/120/120	
Sound reduction (seal only)	STC 64



Protecta®

Polyseam Ltd, 15 St Andrews Road,
 Huddersfield, West Yorkshire, HD1 6SB
 Email: post.uk@polyseam.com

As a part of our policy of on-going product development and testing, we reserve the right to modify, alter or change product specifications without giving notice. All information contained in this document is given in good faith and is provided for guidance only. Any drawings provided are for illustrative purposes only. As Polyseam has no control over the methods or competence of installation and of prevailing site conditions, no warranties, expressed or implied, is intended to be given as to the actual performance of the product mentioned or referred to herein and no liability whatsoever will be accepted for any loss, damage or injury arising from the use of the information given.

Permitted Aperture Sizes
 Where standard aperture sizes of 1200mm by 2400mm are stated, the following additional sizes are automatically permitted:

1100mm x 2900mm	1000mm x 4000mm
800mm x infinite length	

Sheet size: A4	Drawn date & no: 16/1/21
Scale: NTS	Drawn by: K.B